



PRODUCT CATALOG

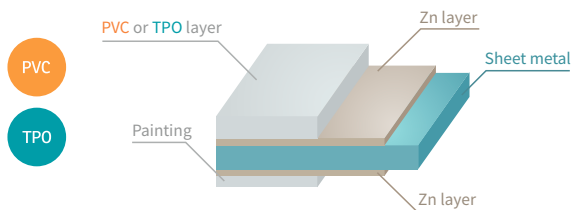
The Company of BSL industrie a. s. offers plastic coating of industrial machine parts and components, and develops and produces plastic protective coatings and layers, plastic caps and plastic coating of metal parts based on customer requirements using dip coating (PVC Plastics), fluidized powder coating (PE, PA) and spray plastic coating technologies.

Our company uses certified up-to-date technology equipment for the manufacturing process in our modern facilities with quality management in place and the quality conforming to European and international standards.



ROOFPLAN®

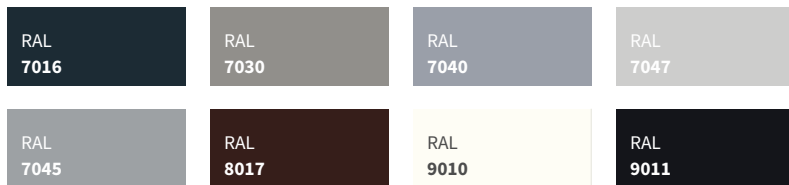
Roofplan is a plastic coated sheet metal designed for roofing systems mainly for insulation of terraced or moderately sloped roofs. The PVC surface treatment guarantees a high stability against climatic influences and in combination with very good adhesion of galvanised plate it creates a highly durable and stable roofing that meets current quality and parameter requirements.



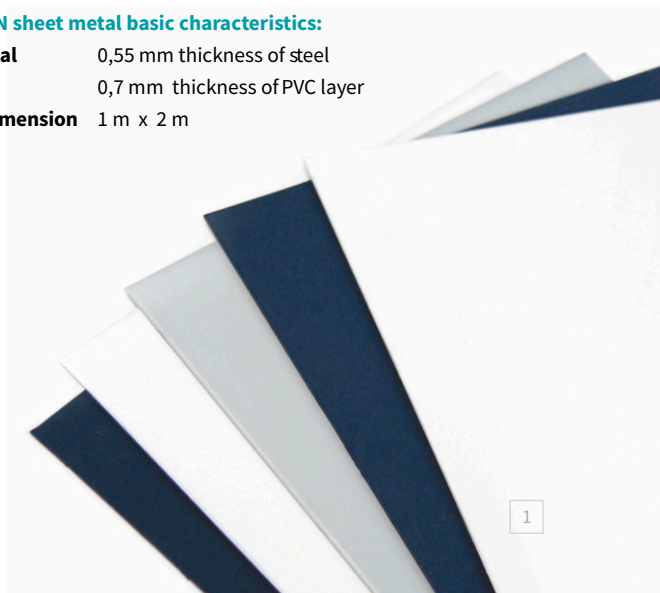
The basic colour scheme meets the standards and same colour shades of fabric and foil producers that can be applied as parts of roofing systems. The PVC layer which the sheet metals are coated with has a very strong adhesion and under the PVC layer the sheet metal is two-side galvanised. The sheet metal is painted from the bottom side. The sheet metal can be bent with guaranteed durability in bent parts in both directions, the internal and external as well.

ROOFPLAN sheet metal basic characteristics:

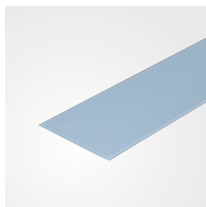
- Sheet metal** 0,55 mm thickness of steel
- PVC** 0,7 mm thickness of PVC layer
- Surface dimension** 1 m x 2 m



Exact shade only on the real product.

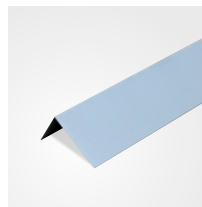


ROOFPLAN® PROFILES



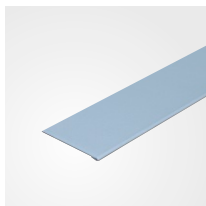
Strip 50 mm

Developed width 50 mm
Length 50 mm
Use profile for the attachment of roofing membrane in the vertical portion



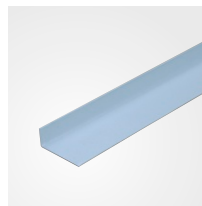
Outside corner flashing 100 mm

Developed width 100 mm
Length 60 + 40 mm
Use profile for the solution of the outside parapet detail of the contact of the horizontal and vertical roof portions



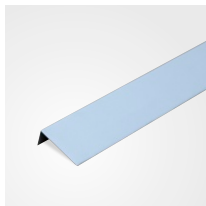
Wall flashing bent

Developed width	70 mm	100 mm
Length	60 + 10 mm	90 + 10 mm
Use	profile for the attachment of roofing membrane in the vertical portion	



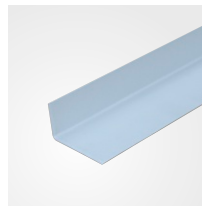
Inside corner flashing 70 mm

Developed width 70 mm
Length 50 + 20 mm
Use profile for the solution of the inside detail of the contact between the horizontal and vertical roof portions



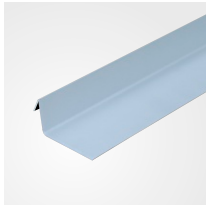
Outside corner flashing 70 mm

Developed width 70 mm
Length 50 + 20 mm
Use profile for the solution of the outside parapet detail of the contact of the horizontal and vertical roof portions



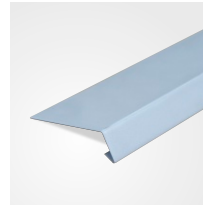
Inside corner flashing 100 mm

Developed width 100 mm
Length 60 + 40 mm
Use profile for the solution of the inside detail of the contact between the horizontal and vertical roof portions



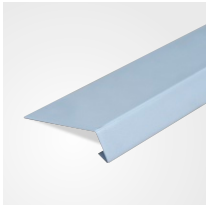
Corner flashing bent 250 mm

Developed width 250 mm
 Length 10 + 180 + 60 mm
 Use system solution for attaching the membrane under another detail component



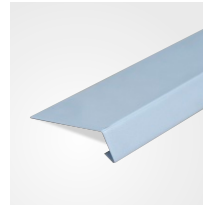
Drip edge 333 mm

Developed width 333 mm
 Length 293 + 30 + 10 mm
 Use component providing roof overlap as required by the CSN standard



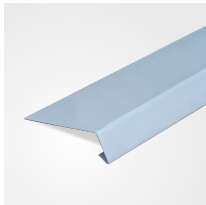
Drip edge 150 mm

Developed width 150 mm
 Length 110 + 30 + 10 mm
 Use component providing roof overlap as required by the CSN standard



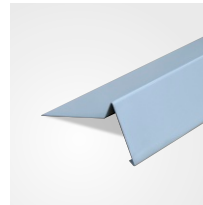
Drip edge 250 mm

Developed width 250 mm
 Length 210 mm + 30 mm + 10 mm
 Use component providing roof overlap as required by the CSN standard



Drip edge 200 mm

Developed width 200 mm
 Length 160 + 30 + 10 mm
 Use component providing roof overlap as required by the CSN standard



Gable flashing 250 mm

Developed width 250 mm
 Length 130 + 30 + 80 + 10 mm
 Use system solution of the gable roof portions

FLEXOPLAN®

Flexoplan is a plastic coated sheet metal with thicker PVC layer to support panel. It is intended as a semiproduct for further processing for production of special transport pallets. The PVC layer serves as a support area for parts, that can be mechanically damaged. Flexoplan and its layer is suitable as a support area for transport systems of glass, automotive parts, aircraft industries and also for garden and swimming-pool equipment. The PVC surface treatment is highly resistant even to climatic influences and the sheet metal can be bent in very flexible way. By its stability the adhesion bridge connecting the PVC layer and galvanised sheet metal guarantees a long and strong service life of this product. The FLEXOPLAN area dimension of 1x2m is a big benefit and it can be utilised by further processing as for example by cutting.

FLEXOPLAN sheet metal basic characteristics:

Sheet metal	0,55 mm thickness of steel
PVC	4 mm thickness of PVC layer
FLEXOPLAN area dimension	1 m x 2 m or 300 mm x 800 mm

Sheet metal	1,00 mm thickness of steel
PVC	4 mm thickness of PVC layer
FLEXOPLAN area dimension	1 m x 2 m or 300 mm x 800 mm

FLEXOSTRIP

PVC protection strip with aluminium base strip. Flexostrip is suitable as bumper for hand trolleys or as protection strip in transport pallets of automotive parts. Basic length is 3m and rectangle profile 30 x 8 mm. Profile of inside aluminium strip with dimensions 1 mm x 20 mm. Strips are flexible and has very good anti abrasion characters. Basic color is blue RAL 5005.

Basic characteristics:

Diameters 8x30x3000 mm

Good flexibility

Stabil characters and long life value

Very good anti abrasion characters

Easy maintenance and assembling

Základní charakteristiky geotextilie ROOFTEX H

Tento typ geotextilie je určen k separaci fóliových systémů (rodině a bytové domy, haly, jímky...)

Základní charakteristiky geotextilie ROOFTEX T

Tento typ geotextilie je určen pro střešní hydroizolaci k ochraně fóliových systémů pro rovné a šikmé střechy. Lze ji dobře kotvit.





BSL Industrie a.s.
U Dvora 1098
687 51 Nivnice
Czech republic

tel. +420 572 633 172
fax +420 572 632 040
bsl@bslindustrie.cz

www.bslindustrie.cz